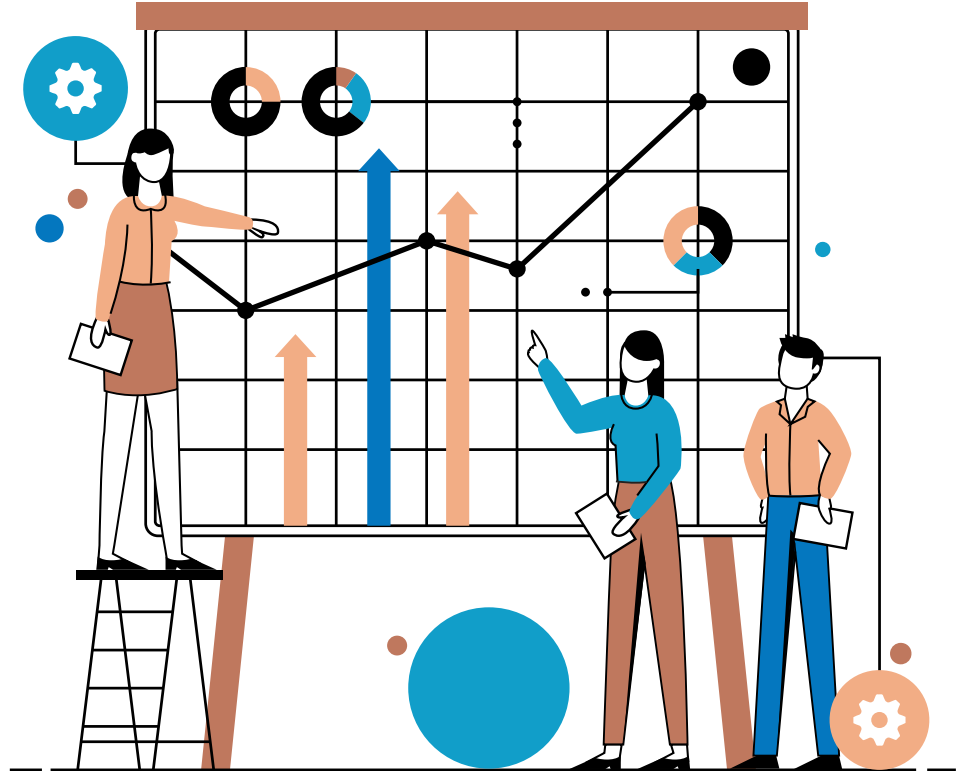


KCIA Student Services

Engagement, Demographics and Services-**April 2024**



Engagement Measures

Enrollment Transition to the 24-25 School Year

Student Retention Statistics

90%  A horizontal bar chart where the blue segment represents 90% and the light gray segment represents the remaining 10%.

Returning Students PK-8th

The majority of current student body has completed the re-enrollment process and will return to KCIA for the 24-25 SY.

3%  A horizontal bar chart where the blue segment represents 3% and the light gray segment represents the remaining 97%.

Current students not returning

A small percentage of current parents have informed us their child will not return to KCIA next year. Most are due to moving outside of district boundaries.

24-25 SY Total Enrollment to Date

Pre-K

5

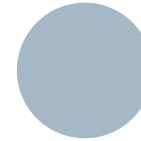
Elementary

305

Middle School

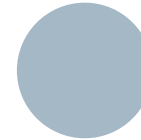
280

Remaining Open Seats



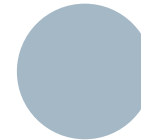
Pre-K

19 Open Seats
Waitlist Count = 0



Elementary

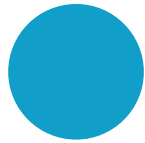
70 Open Seats
Waitlist Count = 0



Middle School

20 Open Seats
Waitlist Count = 11

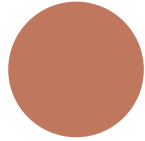
Budgeted Enrollment Information



24

**Pre-K Cooperative
Seats**

Allotted seats for the preK cooperative are determined by the state of Missouri and based on FRL demographics



75

K-8 Grade Levels

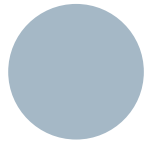
There are 75 seats available at each grade level, K-8



675

Max K-8 Enrollment

If every available K-8 seat were filled, enrollment would be 675 students.



658

EdOps Year End

Budgeting is based on 658 Pre-K through 8th grade students still enrolled as of the end of the school year.

Enrollment Statistics



KCUR NPR Article



Missouri public school enrollment has dropped by 2% since 2019, or by 18,000 students.



Nationally 50,000 students are still unaccounted for. These students left public school during the pandemic and have not returned yet.

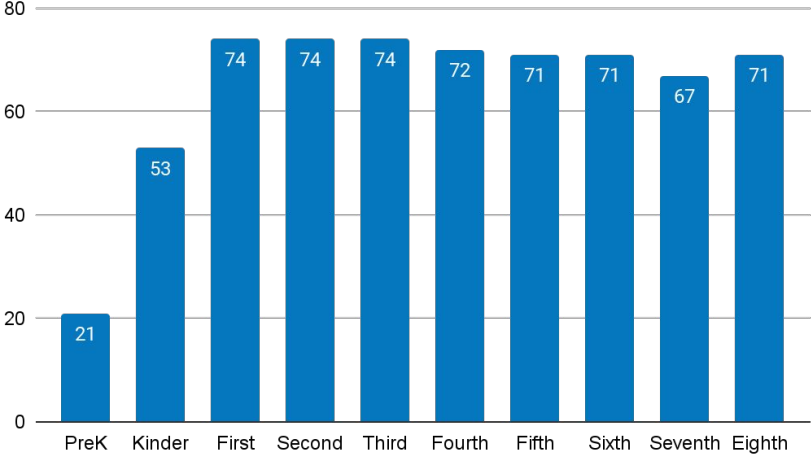


There are 3,000 fewer school-aged children than when the pandemic began.

KCIA Enrollment Update

Updated April 17, 2024

Enrollment by Grade



Total Enrollment



21
PreK @ DL



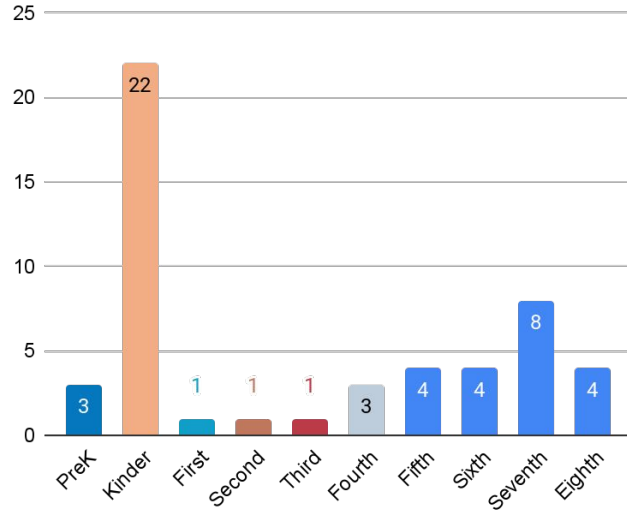
627
K-8th

648
Total PreK-8th

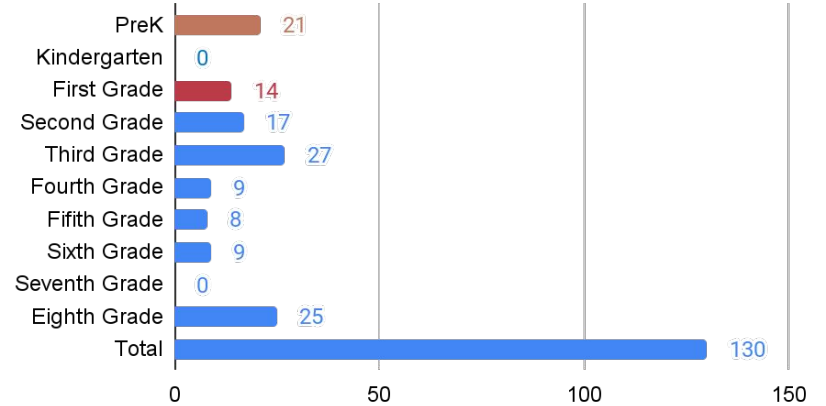
Open Seats and Waitlist Count

Updated April 17, 2024

KCIA Seat Availability 23-24SY



Current Waitlist Count by Grade



Attendance

KCIA Attendance Report

Average % Present Daily - updated April 17, 2024

K-8th Grade

89.43



Average % of student body present each day

Elementary

89.48%



Average % of K-5th graders present each day

Middle School

89.34%



Average % of 6th-8th graders present each day

KCIA Attendance Report

ADA-updated April 17, 2023

K-8th Grade

561.55

Elementary

371.52

Middle School

190.03

Average Daily Attendance (ADA)

Average Daily Attendance is defined as days of student attendance divided by the number of days in the regular school year. A student enrolled all year and attending every day would equal 1 ADA. Strategies for increasing ADA are to increase enrollment or improve attendance. The state uses ADA to determine funding.

KCIA Attendance Report

90% Proportional Attendance—updated April 17, 2024

K-8th Grade

56.6%



% of students who
are attending at
90% or better

Elementary

56.7



% of students who
are attending at
90% or better

Middle School

56.6%



% of students who
are attending at
90% or better

KCIA Attendance Report

85% Proportional Attendance—updated April 17, 2024

K-8th Grade

77.2%



% of students who
are attending at
85% or better

Elementary

76.8



% of students who
are attending at
85% or better

Middle School

77.9%



% of students who
are attending at
85% or better

Attendance Strategies and Interventions

KCIA recognizes that chronic absenteeism is a national challenge, with chronic absenteeism rates doubling in recent years. Absenteeism is a whole-school issue and requires collaborative efforts toward improvement.

- Data Consultations
- Spring Attendance Campaign
- Residency Verifications
- Mentoring-Check In System
- Spring Challenges and Incentives
- Capture of district and school level plans into written documents
- Researching truancy options (truancy officer, practices, court with emphasis on resources for families as opposed to penalties)

Demographics

Countries of Birth

KCIA students come from 31 countries. Currently 38% of our students are immigrants or refugees. Refugee students may belong to a nationality that is not the same as his/her birth country. Refugee families are often forced to flee their countries of nationality to the safety of a nearby refugee camp or evacuation point. Many of our students are born in refugee camps before arriving in the United States. For example, a student may have been born in Slovakia but his/her nationality is Somali.

Afghanistan	Burundi	Cameroon	Chad
Columbia	Cuba	Djibouti	Nicaragua
Egypt	Eritrea	Ethiopia	Guatemala
Honduras	Iraq	Kenya	Malawi
Myanmar	Mexico	Sudan	Slovakia
Somalia	El Salvador	Syria	Thailand
Turkey	Tanzania	Uganda	Vietnam

Home Languages

KCIA families speak 19 languages. Both written and spoken home-school communication is routinely translated and provided as options for parents in addition to English communication.

Arabic	MaiMai	Burmese	English
French	Karen	Kinyarwanda	Marshallese
Dari	Pashto	Farsi	Somali
Spanish	Swahili	Kiswahili	Vietnamese
Mashaguli	Amharic	Oromo	

Student Demographics

